

YOUR NEW WIRELESS GENIE MINI IS HERE!



Here's how to connect and activate your Wireless Genie® Mini so you can enjoy the best in video entertainment.

- 1**
Connect
- 2**
Setup
- 3**
Activate
- 4**
Program



1 CONNECT YOUR WIRELESS GENIE MINI

- Connect the HDMI cable from your TV to your new Genie Mini.
- Plug the power cord into the Genie Mini, then into a power outlet. If it doesn't automatically power up, press the POWER button.
- Turn on your TV. The CONNECTING TO VIDEO BRIDGE screen will appear.

2 SETUP

Go to the Genie® HD DVR.

- On your remote, press MENU.
- Select SETTINGS and then WHOLE-HOME.
- Select MANAGE CLIENTS and then ADD CLIENT.
- Note the PIN that displays on the screen.
- Keep the Genie on the ADD A CLIENT screen and go to your new Genie Mini.

Go to your new Wireless Genie Mini:

- Wait 2 minutes until the CONNECT NOW label is active.
- Verify that the Wireless Signal Strength icon displays three green bars. (For troubleshooting, go to directv.com/wirelessgeniemini.)
- Select CONNECT NOW and wait for the countdown to complete.
- Using your remote, enter the PIN on the ENTER PIN screen.

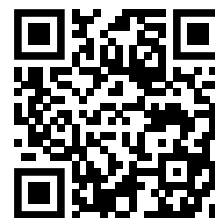
Note: The new Genie Mini may display a flashing red LED and the screen may flash gray intermittently during this setup step.

Return to the Genie® HD DVR.

- Select DONE on the ADD A CLIENT screen.

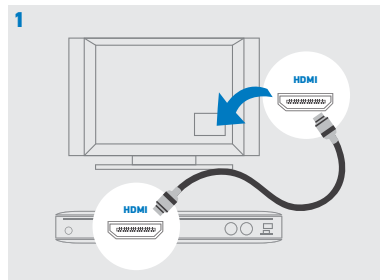
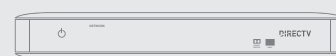
*Note: If the Wireless Genie Mini displays the Enter PIN screen again after the 2-minute countdown, please call **800.531.5000**.*

- Once the guided setup is complete, select WATCH TV.

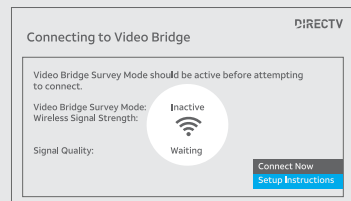


Instructions can be found online at directv.com/equipmentinstall or by scanning the QR code.

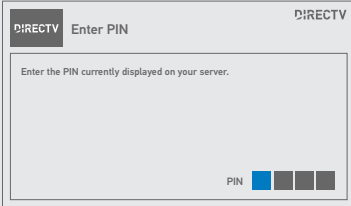
Genie Mini



1 Connecting to Video Bridge



2 Enter PIN



YOUR NEW WIRELESS GENIE MINI IS HERE!



3 ACTIVATE YOUR NEW WIRELESS GENIE® MINI



Go to directv.com/activate and sign in, then follow the instructions, OR



Call **800.388.6597** for our automated activation line.

4 PROGRAM YOUR REMOTE CONTROL

If you are prompted to program your remote control, follow the on-screen instructions or go to directv.com/programremote

For more information, go to directv.com/support

Tip: Search "Wireless Genie Mini"

